

# Performance on SSA Headline Indicators Baltimore City

Showing performance as of March 2025 (CFSR)

Version: 5/1/25 | CJAMS extract: 4/15/25

**Data Dictionary:** For more information about each indicator refer to the Data Dictionary available at

<https://docs.google.com/document/d/1aWUspHzMqVKD5wWJ178qTbcFAACZ6ZKIZ-CaO5XtY9CM/edit>.

The Dictionary describes in detail how each indicator is defined, the children it includes, and other important notes.

**Small counties & rare outcomes:** In small counties or for indicators in which the outcome is rare, a change in one or two children can create a large change in performance, and a large percent change, from one period to the next. In these cases, such a large change may not be cause for alarm. See the data table (last page) for the actual number of children that were included in the calculation. If performance is not shown for a given period or indicator, it means there were no children eligible for the indicator and therefore no performance to report.

**Questions & feedback:** For questions about these dashboards or for suggestions to improve them, contact Maria Tillman at [maria.tillman@maryland.gov](mailto:maria.tillman@maryland.gov) or 443-845-0494.

**Dashboard Schedule:** This dashboard is updated every quarter to provide the most recent data available. For each update, performance is shown for a new "12-month cohort" of children. The cohorts used are as follows:

- 1 - CFSR - April to March of the following year  
(e.g., Apr 2021 - Mar 2022)
- 2 - SFY - July to June of the following year  
(e.g., Jul 2021 - Jun 2022)
- 3 - FFY - Oct to Sep of the following year  
(e.g., Oct 2021 - Sep 2022)
- 4 - CY - Jan to Dec of the same year  
(e.g., Jan 2022 - Dec 2022)

# Table of Contents

## **Headline Indicators (most recent period, trends in performance, % change over time)**

- p. 03 ..... Safety
- p. 04 ..... Permanency
- p. 05 ..... Well-Being

## **Headline Indicators (trends in numerator and denominator)**

- p. 06 ..... Safety
- p. 07 ..... Permanency
- p. 08 ..... Well-Being

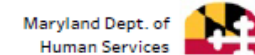
## **Other**

- p. 09 ..... Data table

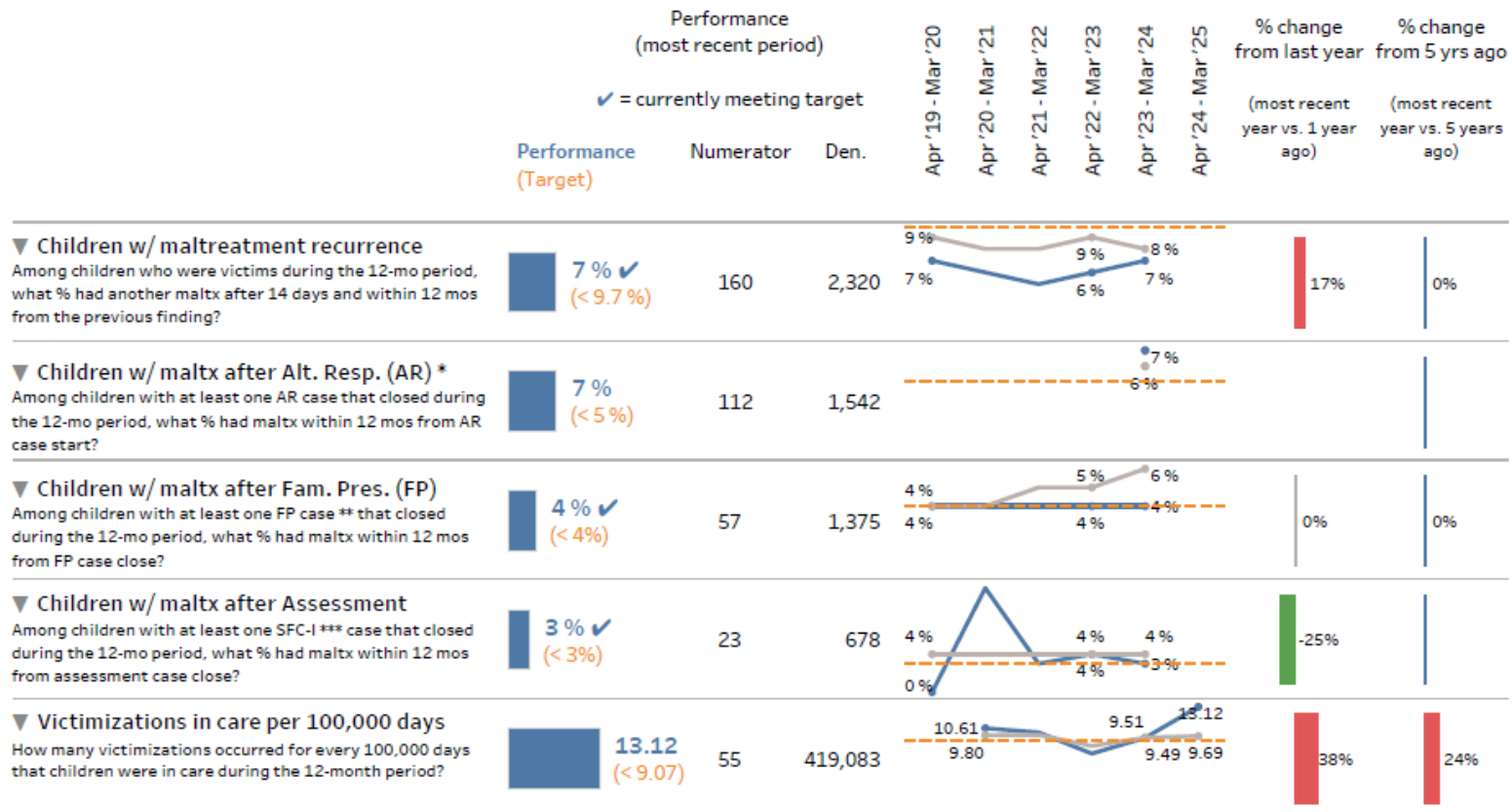
## **Storylines**

- p. 10 ..... Entries by race, ethnicity, age, and circumstance of removal
- p. 13 ..... Permanency in 12 mos by by race, ethnicity, age, and circumstance of removal
- p. 19 ..... Placement stability by race, ethnicity, and age

## Child Safety Headline Indicators | Baltimore City (CFSR)



Children, youth, families, and adults are safe and free from maltreatment



All indicators exclude children 18 and older. Victimization = a report that was Indicated or Unsub.

\* Due to AR expungement requirements, the AR data contains only the most recent year.

\*\* Consolidated or IFPS. \*\*\* SFC-I = Services to Families w/children.

▲ A higher value is more desirable. ▼ A lower value is more desirable.

● MD ● Target  
■ B. City

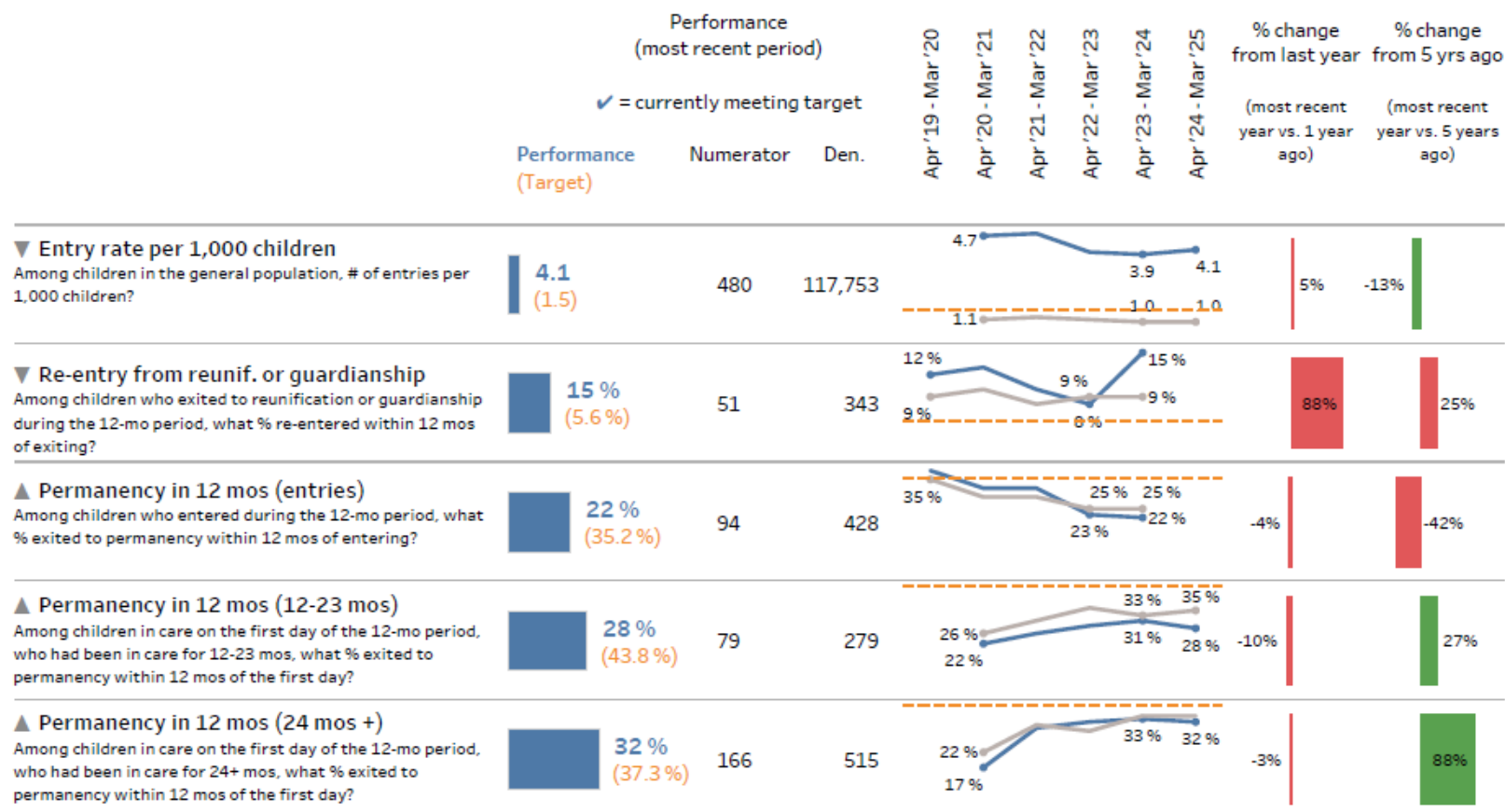
■ Performance is going in wrong direction

## Permanency Headline Indicators | Baltimore City (CFSR)

Maryland Dept. of  
Human Services



Children, youth, & adults live in safe, supportive, & stable families where they can grow & thrive



All indicators exclude children 18 and older.

Permanency = exit to reunification, guardianship, or adoption.

▲ A higher value is more desirable. ▼ A lower value is more desirable.

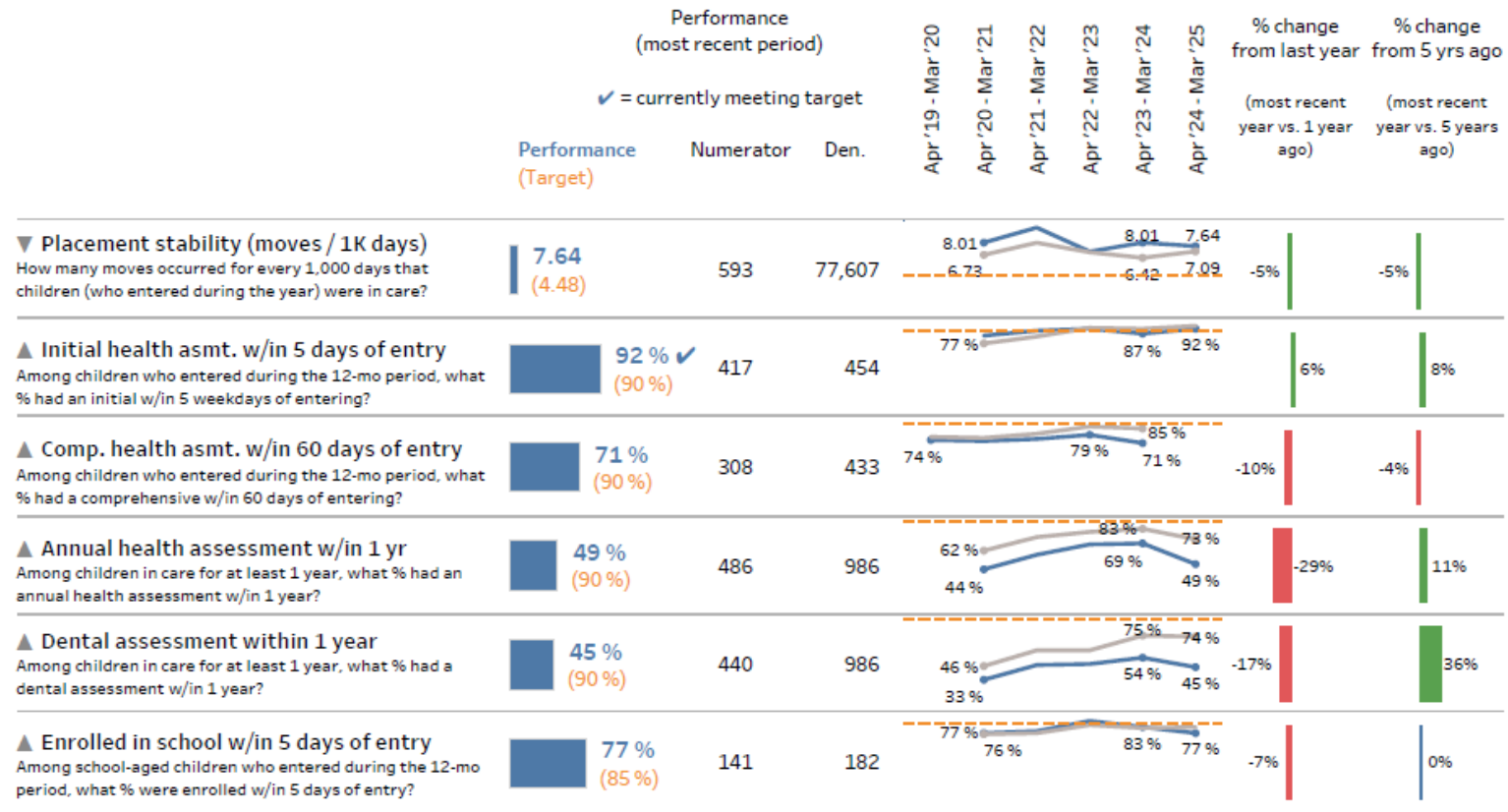
● MD ● Target  
■ B. City

■ Performance is going in wrong direction

## Well-Being Headline Indicators | Baltimore City (CFSR)

Maryland Dept. of  
Human Services

Children, youth, families, &amp; adults are healthy, resilient, and have stable and lasting connections



All indicators exclude children 18 and older.

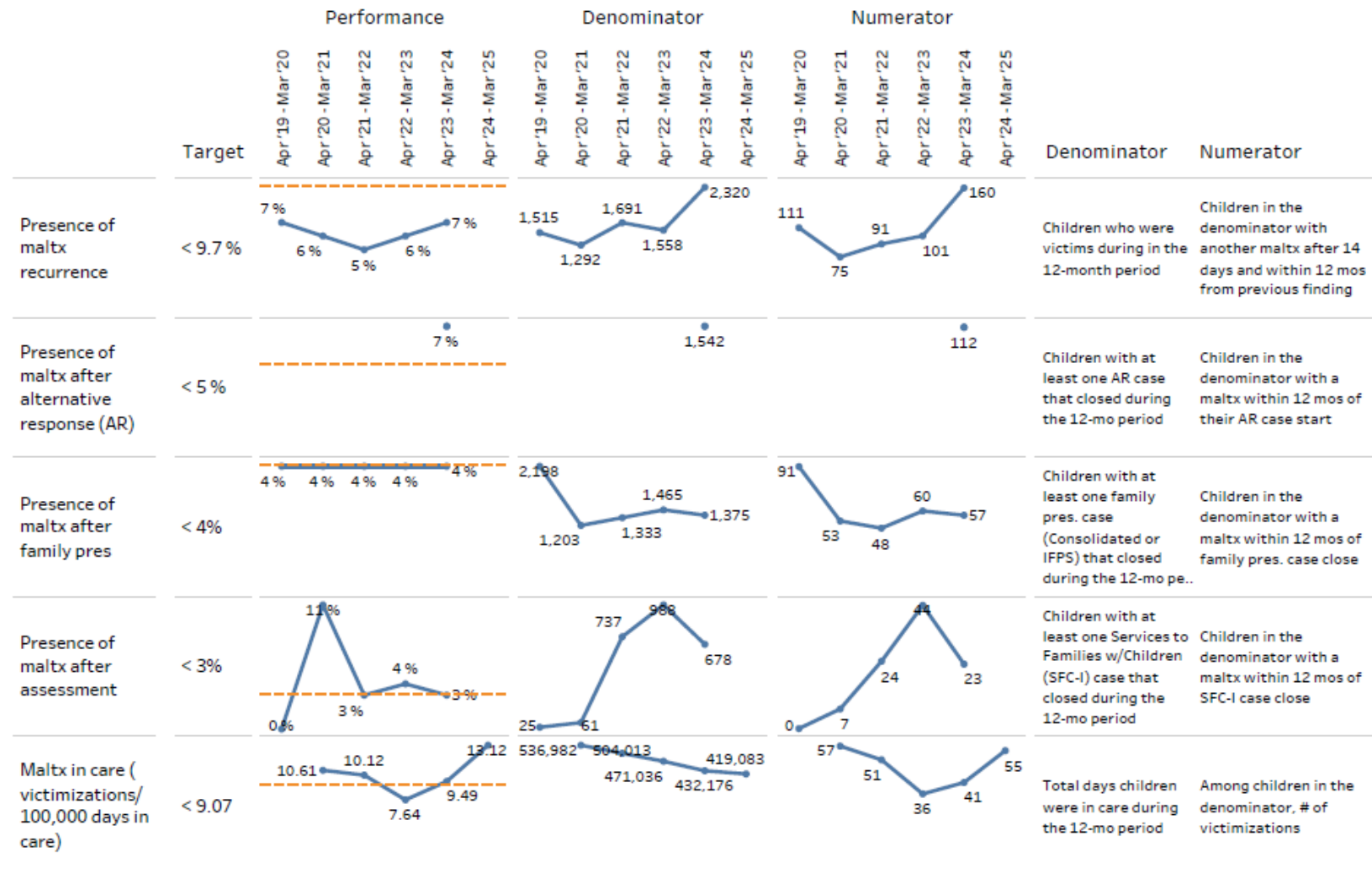
▲ A higher value is more desirable. ▼ A lower value is more desirable.

● MD ● Target

■ B. City

Performance is going in wrong direction

## Safety | Performance, Numerator, &amp; Denominator | Baltimore City

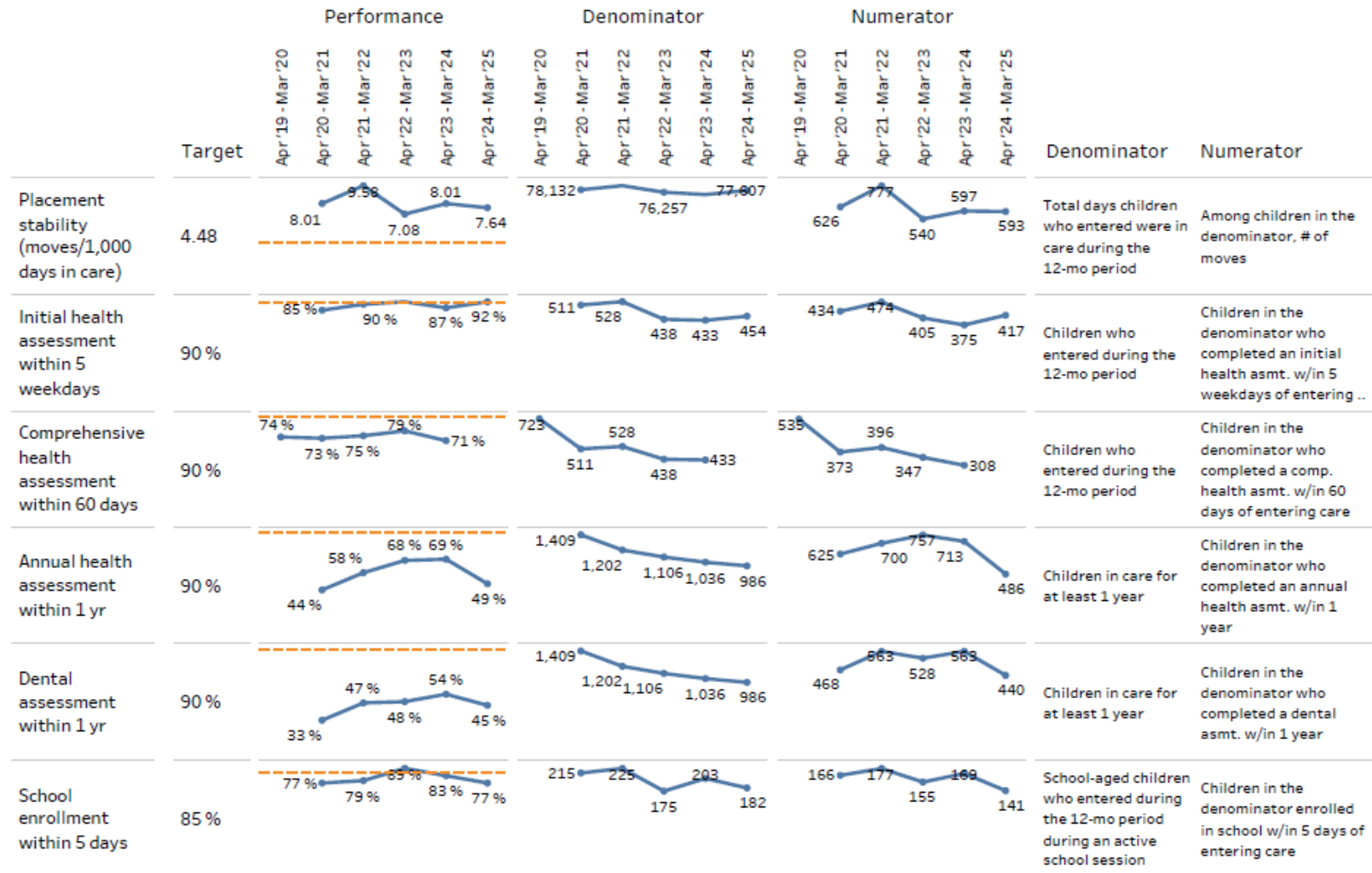


## Permanency | Performance, Numerator, & Denominator | Baltimore City





## Well-Being | Performance, Numerator, &amp; Denominator | Baltimore City





			Apr '19 - Mar '20	Apr '20 - Mar '21	Apr '21 - Mar '22	Apr '22 - Mar '23	Apr '23 - Mar '24	Apr '24 - Mar '25
Safety	% with another maltx after 14 days and within 12 mos from previous finding (maltx recurrence)	Numerator Denominator Performance	111 1,515 7.0	75 1,292 6.0	91 1,691 5.0	101 1,558 6.0	160 2,320 7.0	
	% with maltx within 12 mos from alternative response (AR) case start	Numerator Denominator Performance					112 1,542 7.0	
	% with maltx within 12 mos from family preservation (FP) case close	Numerator Denominator Performance	91 2,198 4.0	53 1,203 4.0	48 1,333 4.0	60 1,465 4.0	57 1,375 4.0	
	% with maltx (and were not served in family pres) within 12 mos from assessment case close	Numerator Denominator Performance	0 25 0.0	7 61 11.0	24 737 3.0	44 988 4.0	23 678 3.0	
	# of victimizations per 100,000 days in care (maltx in care)	Numerator Denominator Performance		57 536,982 10.6	51 504,013 10.1	36 471,036 7.6	41 432,176 9.5	55 419,083 13.1
	# entering per 1,000 children (entry rate)	Numerator Denominator Performance		553 117,753 4.7	563 117,753 4.8	471 117,753 4.0	459 117,753 3.9	480 117,753 4.1
Permanency	% re-entering within 12 mos from permanency	Numerator Denominator Performance	77 645 12.0	53 412 13.0	44 456 10.0	34 402 8.0	51 343 15.0	
	% exiting to permanency within 12 mos (entries)	Numerator Denominator Performance	281 733 38.0	161 503 32.0	167 530 32.0	102 437 23.0	94 428 22.0	
	% exiting to permanency within 12 mos (12-23 mos)	Numerator Denominator Performance		85 392 22.0	98 376 26.0	76 265 29.0	88 281 31.0	79 279 28.0
	% exiting to permanency within 12 mos (24 mos+)	Numerator Denominator Performance		88 521 17.0	197 665 30.0	215 662 32.0	187 568 33.0	166 515 32.0
	# of moves per 1,000 days in care (placement stability)	Numerator Denominator Performance		626 78,132 8.0	777 81,133 9.6	540 76,257 7.1	597 74,543 8.0	593 77,607 7.6
	% with an initial health assessment within 5 weekdays of entering care	Numerator Denominator Performance		434 511 85.0	474 528 90.0	405 438 92.0	375 433 87.0	417 454 92.0
Well-being	% with a comprehensive health assessment within 60 days of entering care	Numerator Denominator Performance	535 723 74.0	373 511 73.0	396 528 75.0	347 438 79.0	308 433 71.0	
	% with an annual health assessment within 1 yr	Numerator Denominator Performance		625 1,409 44.0	700 1,202 58.0	757 1,106 68.0	713 1,036 69.0	486 986 49.0
	% with a dental assessment within 1 yr	Numerator Denominator Performance		468 1,409 33.0	563 1,202 47.0	528 1,106 48.0	563 1,036 54.0	440 986 45.0
	% enrolled in school within 5 days of entering care	Numerator Denominator Performance		166 215 77.0	177 225 79.0	155 175 89.0	169 203 83.0	141 182 77.0

## Entries into care | Baltimore City (Apr '24 - Mar '25)

### Racial disproportionality and disparity for children entering foster care

	Child population		Entries into care		Disproportionality *		Disparity (vs. white) **	
	#	%	#	%	Calculation	Rate	Calculation	Rate
AI or AN	220	0%	1	0%	(0 % / 0 %)	1.2	(1.2 / 0.7)	1.8
Asian	2,030	2%	1	0%	(0 % / 2 %)	0.1	(0.1 / 0.7)	0.2
Black or AA	85,790	68%	371	77%	(77 % / 68 %)	1.1	(1.1 / 0.7)	1.7
Hispanic	11,435	9%	15	3%	(3 % / 9 %)	0.3	(0.3 / 0.7)	0.5
White	21,435	17%	55	11%	(11 % / 17 %)	0.7	(0.7 / 0.7)	1.0
Two or More	4,840	4%	29	6%	(6 % / 4 %)	1.6	(1.6 / 0.7)	2.3
Unable to det.	0	0%	8	2%	(2 % / 0 %)			
<b>Total</b>	<b>125,750</b>	<b>100%</b>	<b>480</b>	<b>100%</b>				

\* Disproportionality: The under or over representation of a racial or ethnic group compared to its % in the population: > 1 = overrepresentation, < 1 = underrepresentation

\*\* Disparity: The unequal outcomes of one racial or ethnic group compared to the outcomes for another (i.e., a reference group). Compared to white children, this group is ...  
 > 1 = X.X times more likely to enter care < 1 = equally likely to enter care < 1 = X.X times less likely to enter care

### Entry rate per 1,000 children, by age

Age	Child pop.	Entries	Baltimore City	Maryland
< 1	7,426	136	18.3	4.4
1 - 4	28,091	101	3.6	1.0
5 - 10	39,187	99	2.5	0.7
11 - 13	19,206	64	3.3	0.8
14 - 17	23,843	80	3.4	1.0
<b>Total</b>	<b>117,753</b>	<b>480</b>	<b>4.1</b>	<b>1.0</b>

Entry rate = # of entries / child population \* 1,000

### Age makeup of children entering, by age

Age	Entries	Baltimore City	Maryland
< 1	136	28%	22%
1 - 4	101	21%	22%
5 - 10	99	21%	22%
11 - 13	64	13%	13%
14 - 17	80	17%	21%
<b>Total</b>	<b>480</b>	<b>100%</b>	<b>100%</b>

Child population data by race is from a special tabulation of the 2015-2019 American Community Survey (ACS) 5-year estimate (Citizen Voting Age Population [CVAP]).  
 Child population data by age is from the National Center for Health Statistics (2020 Vintage Bridged-Race Postcensal Population Estimates). This file provides estimates of child populations in each county by single-year of age. As a result, the total child population shown may differ between the two sources.

## Placement stability (moves/1,000 days in care) | Baltimore City (Apr '24 - Mar '25)

How many moves occurred for every 1,000 days that children (who entered during the year) were in care?

Placement moves per 1,000 days in care, by race & ethnicity

Race	Days in care	Moves	Baltimore City	Maryland
AI or AN	14	0	0.00	0.00
Asian	175	2	11.43	10.60
Black or AA	59,575	474	7.96	7.39
Hispanic	1,999	10	5.00	6.04
NH or PI	0	0		
White	9,146	61	6.67	6.94
Two or More	5,179	36	6.95	7.62
Unable to det.	1,519	10	6.58	4.96
<b>Total</b>	<b>77,607</b>	<b>593</b>	<b>7.64</b>	<b>7.09</b>

Placement rate = # of moves / # of days in care \* 1,000

Placement moves per 1,000 days in care, by age at entry

Age	Days in care	Moves	Baltimore City	Maryland
< 1	22,260	142	6.38	6.07
1 - 4	17,328	133	7.68	6.43
5 - 10	17,750	119	6.70	7.40
11 - 13	9,883	76	7.69	7.07
14 - 17	10,386	123	11.84	8.65
<b>Total</b>	<b>77,607</b>	<b>593</b>	<b>7.64</b>	<b>7.09</b>

Placement rate = # of moves / # of days in care \* 1,000